
IISADMPWD Replacement Tool v1.4 Installation and Configuration Guide

Instructions to Install and
Configure IISADMPWD
Replacement Tool v1.4

Web Active Directory, LLC

IISADMPWD Replacement Tool v1.4

Installation and Configuration Guide

Contents

Overview	2
Solution Benefits	2
Solution Architecture	2
IISADMPWD Replacement Tool Features	3
IIS Technical Notes	4
Installation Support.....	4
System Requirements	4
Upgrades from Previous Versions of IISADMPWD Replacement Tool	6
Upgrade Procedure for Releases prior to v1.2	6
Upgrading IISADMPWD Replacement Tool from a pre-v1.2 Release	6
Installation Instructions	7
Installation Procedure.....	7
Quick Start Guide	11
Run the Check Password Status Web Application	11
Configure the Check Password Status Application	11
Run the Change Password Web Application.....	11
Configure the Change Password Application.....	12
IISADMPWD Replacement Tool Administration	12
Helpful Videos	12
Best Practices for Implementation	12
Securing the Admin Page	13

IISADMPWD Replacement Tool v1.4

Installation and Configuration Guide

Overview

IISADMPWD Replacement Tool sits in front of your web application and checks the password status for a user before routing them to your web application. The solution comprises two simple ASP.NET web applications: one to check the password status and one to allow password changes if the password is expired or must be changed at next logon. The solution essentially acts as a front end for your web application and you can configure where the IISADMPWD Replacement Tool application redirects after it checks a user's password status.

These configuration notes provide direction on installing and configuring IISADMPWD Replacement Tool for your environment. The WebAD IISADMPWD Replacement Tool replaces the original IISADMPWD ASP application available from Microsoft® for versions of IIS before IIS 7 and Windows Server 2008. Make sure you meet the system requirements before you install the solution and you can get more information about IISADMPWD Replacement Tool at <http://www.webactivedirectory.com/products/iisadmpwd/>.

Solution Benefits

IISADMPWD Replacement Tool offers several benefits to your organization from ease of use to affordability.

- Users can change their own password and avoid calls to the help desk.
- IISADMPWD Replacement Tool only requires one extra step in the authentication process: asking the user for her Active Directory user name to check password status. Otherwise, your application works exactly the same way as it does now.
- You do not need to make changes to your web application's authentication scheme.
- IISADMPWD Replacement Tool has a very affordable one-time purchase price and you can use it for multiple web applications.

Solution Architecture

The diagram shows the workflow for IISADMPWD Replacement Tool. This simple workflow provides a consistent approach for authentication and only adds one extra step to the authentication process.

1. A user requests to log in to the check password status application. This application acts as a front end to your web application and uses Anonymous authentication in IIS.
2. The check password status application checks the Active Directory password status to determine if the user needs to change the password.
3. The check password status application sends the user to your web application if no password change is required. Otherwise, the user goes to the change password application

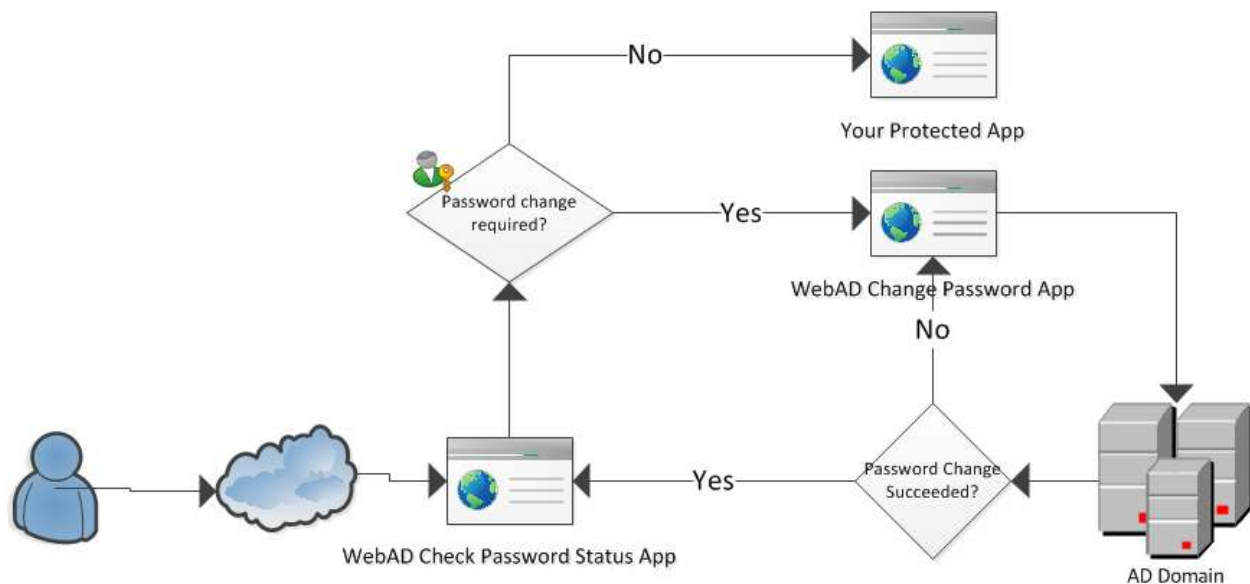
IISADMPWD Replacement Tool v1.4

Installation and Configuration Guide

where she can change her AD password. The change password application also uses Anonymous authentication.

4. After the password change completes successfully, the user is routed back to the check password status application to begin the login process again.

Web Active Directory IISADMPWD Replacement Tool Application Architecture



IISADMPWD Replacement Tool Features

Take note of the following features in IISADMPWD Replacement Tool.

- The IISADMPWD Replacement Tool solution includes two web applications:
 1. Check Password Status: Acts as the first page of the authentication process and checks the Active Directory password status for a user to determine if the password must be changed.
 2. Change Password: Allows users to change their AD password.
- IIS Anonymous authentication allows users to access the web applications regardless of their password status.
- Once the password status check completes and no password change is needed, the Check Password Status web application redirects the user to your web application and your application then authenticates the user normally.
- You can use the redirect-401-1-auth-failure.htm file to redirect clients who receive a HTTP 401.1 status code response (Access is denied due to invalid credentials). This allows you to send these

IISADMPWD Replacement Tool v1.4

Installation and Configuration Guide

clients to the Check Password Status application or alternately the Change Password application if you desire.

- Change your web application configuration to start with the Check Password Status application. This ensures the password status is checked before the user tries to authenticate against your web application.

IIS Technical Notes

You do not need to make any IIS changes to continue using your existing web application with IISADMPWD Replacement Tool.

- IIS 7 will not authenticate users under Windows, Basic or Digest authentication when the user has an expired password or the password must be changed at next logon.
- IISADMPWD Replacement Tool uses Anonymous authentication to allow all users to access the application, regardless of AD password status.
- IISADMPWD Replacement Tool allows you to continue using your web application without changing your current authentication architecture or scheme.

Installation Support

Get support for Web Active Directory solutions at <http://support.webactivedirectory.com/> if you need assistance with issues that arise while installing or configuring IISADMPWD Replacement Tool. You can also reference videos for help with the product on the Web Active Directory site at <http://webactivedirectory.com/products/iisadmpwd/videos>.

System Requirements

Please note the important system requirements detailed below before installing IISADMPWD Replacement Tool. You can install pre-requisites using the Microsoft Web Platform Installer at <http://www.microsoft.com/web/downloads/platform.aspx>. You can also install each component individually using the links below if you do not want to use the Web Platform Installer.

Requirement	Description
Windows Server 2008 or 2008 R2	Web, Standard, Enterprise or Datacenter Edition: Hosts IISADMPWD Replacement Tool applications. Important Note Please ensure the server is not a domain controller and is only a member server in the domain.

IISADMPWD Replacement Tool v1.4

Installation and Configuration Guide

IIS 7 or later	<p>Hosts ASP.NET processes and web applications.</p> <p>Important Note for Windows Server 2008 and later</p> <p>You might need to set up IIS and ASP.NET on Windows Server 2008 to run .NET web applications. The default Windows Server 2008 installation does not include these components and the procedure below describes how to install the features.</p> <p>Install IIS and ASP.NET on Windows Server 2008 and 2008 R2</p> <ol style="list-style-type: none">1. Launch the Server Manager by choosing Start > Run and typing in CompMgmtLauncher.exe.2. In the left pane of Server Manager, select the node that represents the server that you are currently working on.3. In the right pane, expand the Roles Summary section and then click Add Roles. The Add Roles Wizard appears.4. Click Next. The wizard moves to the Select Server Roles step.5. Select the Web Server (IIS) check box and then click Next. The next wizard step that appears is information that guides you in the installation.6. Click Next. The wizard moves to the Role Services step. A list of available role services is displayed. If you click the name of a role, a short description of the role is displayed.7. Select the Application Development role service, and then select the ASP.NET check box. Note: You will be prompted with the related options that are also required for Web application development. Click Add Required Role Services.8. Select Windows Authentication under the Security role service.9. Click Next and verify the role service selections.10. Click Install to start the IIS and ASP.NET installation process.11. When the installation is complete, click Close. <p>For any questions regarding installing these components, please contact Web Active Directory support at support@webactivedirectory.com.</p> <p>Installing IIS on Windows Server 2008</p> <p>http://learn.iis.net/page.aspx/29/install-iis-7-on-windows-server-2008-or-windows-server-2008-r2/</p>
Microsoft .NET Framework version 4.0	<p>Runs .NET applications. You can download .NET 4.0 from Microsoft's download site at http://www.microsoft.com/download/en/details.aspx?id=17851.</p>
ASP.NET MVC 3 Tools	<p>Runs MVC web applications like IISADMPWD Replacement Tool. You can download the tools at http://www.microsoft.com/download/en/details.aspx?displaylang=en&id=1491.</p>

IISADMPWD Replacement Tool v1.4

Installation and Configuration Guide

Windows service account with permissions to change passwords in Active Directory	Used by IISADMPWD Replacement Tool to change passwords in Active Directory. Important Note Your service account must have privileges to change passwords in Active Directory. Refer to Procedure 2 of the support article at https://getsatisfaction.com/web_active_directory/topics/what_permissions_does_a_service_account_need_to_reset_and_change_ad_passwords_and_to_unlock_ad_accounts for assistance configuring these permissions.
7 MB disk space	Stores physical files used to run IISADMPWD Replacement Tool

Upgrades from Previous Versions of IISADMPWD Replacement Tool

Web Active Directory made a few changes to the product installer with the release of IISADMPWD Replacement Tool v1.2. If you are upgrading from a version of IISADMPWD Replacement Tool prior to v1.2, please follow the guidelines below to properly install the new version.

NOTE

Typically, you can easily upgrade IISADMPWD Replacement Tool releases by running the product installer for the new release. The product installer automatically detects the installation of the previous version and prompts you to upgrade to the new release version. In the case of the upgrade to v1.2, the installer changes made by Web Active Directory to the IISADMPWD Replacement Tool product installer prevents the automatic upgrade option.

Upgrade Procedure for Releases prior to v1.2

To upgrade from a version prior to the v1.2 release, you must uninstall the current version of IISADMPWD Replacement Tool that you have installed on your system and then install the new version. The uninstallation process will not remove any of your current configuration options in protected files like the configuration file or Web.config. In fact, you can even see that certain files stay on the file system after the uninstallation so they will be protected from being overwritten.

Upgrading IISADMPWD Replacement Tool from a pre-v1.2 Release

Follow the simple procedure here to upgrade PeoplePassword from a release prior to v3.1.

1. Open the Add/Remove Programs (Windows Server 2003) or Programs and Features (Windows Server 2008) applet from the Windows Control Panel.
2. Locate the current installation of WebAD IISADMPWD Replacement Tool and choose to uninstall it.
3. Once the uninstallation process completes, locate the product installer package for the new release of IISADMPWD Replacement Tool.

IISADMPWD Replacement Tool v1.4

Installation and Configuration Guide

4. Run the installation to complete the upgrade process using the guidance in the Installation Procedure section on page 7.

NOTE

IISADMPWD Replacement Tool upgrades preserve your current customization settings including configuration settings and style sheet and banner changes.

Installation Instructions

This section includes installation instructions for new installations of IISADMPWD Replacement Tool.

Installation Procedure

The IISADMPWD Replacement Tool installer includes two web applications. The default installation directory is %Program Files%\WebActiveDirectory\IISADMPWD_ReplacementTool.

The IISADMPWD Replacement Tool installer contains everything you need to run IISADMPWD Replacement Tool. Refer to the System Requirements section on page 4 for more information about prerequisites. The installation takes less than two minutes and leaves you with a clean IISADMPWD Replacement Tool installation that is ready for you to use in your environment after a little configuration.

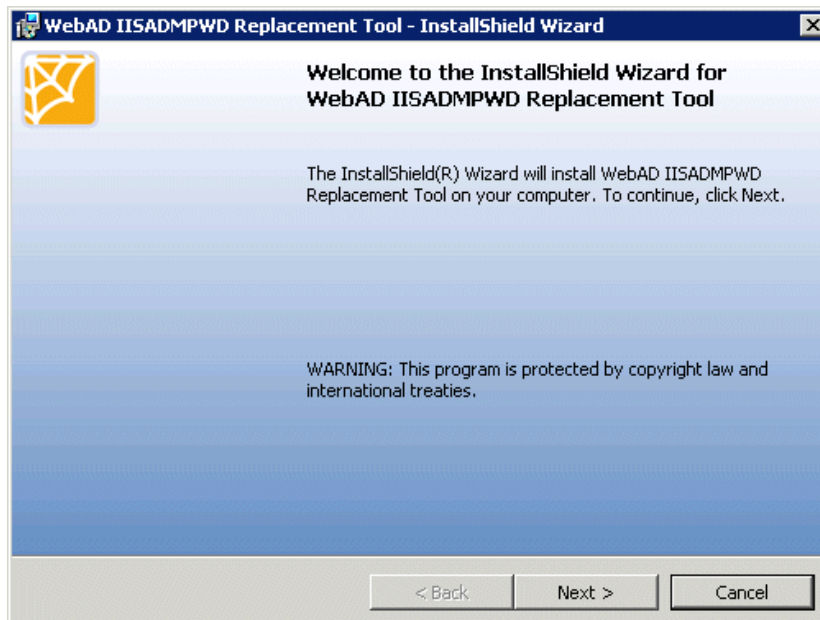
NOTE

When installing applications on Windows Server 2008, ***you must run the installer as an administrator*** or the installation will not complete all the setup tasks. Even if you are logged in to the installation server as an administrator, the operating system will not run the installation under the administrator account's privileged security context unless you explicitly run it this way. Ensure you right-click the WebAD_IISADMPWD_ReplacementToolSetup.exe file and choose ***Run as administrator*** to install IISADMPWD Replacement Tool under an administrative security context.

1. Unzip the contents of the zip file you downloaded from the Web Active Directory download site to a location on your local installation system.
2. Read the important installation notes contained in the installation guide included with the download package.
3. To begin the installation, right-click and choose Run as administrator to run the WebAD_IISADMPWD_ReplacementToolSetup.exe file that you extracted from the zip file. This starts the product installer under an administrative user security context. The installer will not work correctly if you do not right-click and choose Run as administrator.

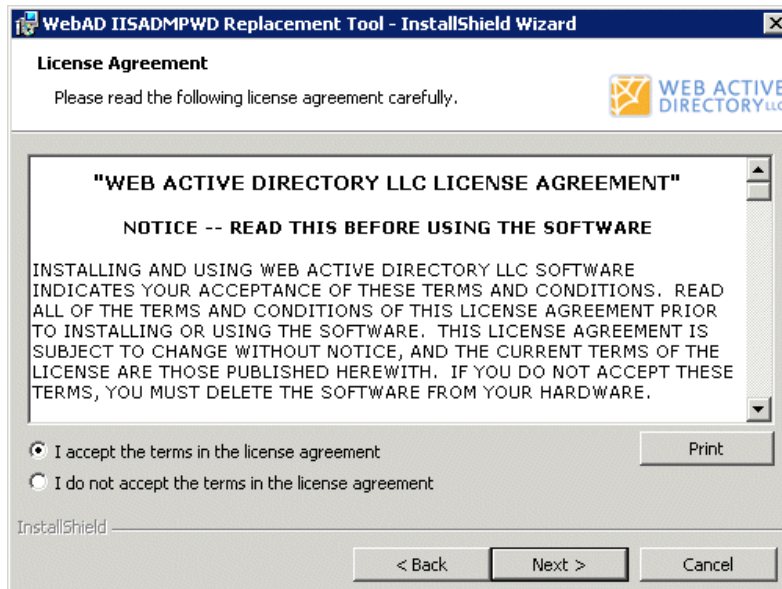
IISADMPWD Replacement Tool v1.4 Installation and Configuration Guide

4. The installer begins and displays the IISADMPWD Replacement Tool Installer Welcome Page.



Click Next to continue.

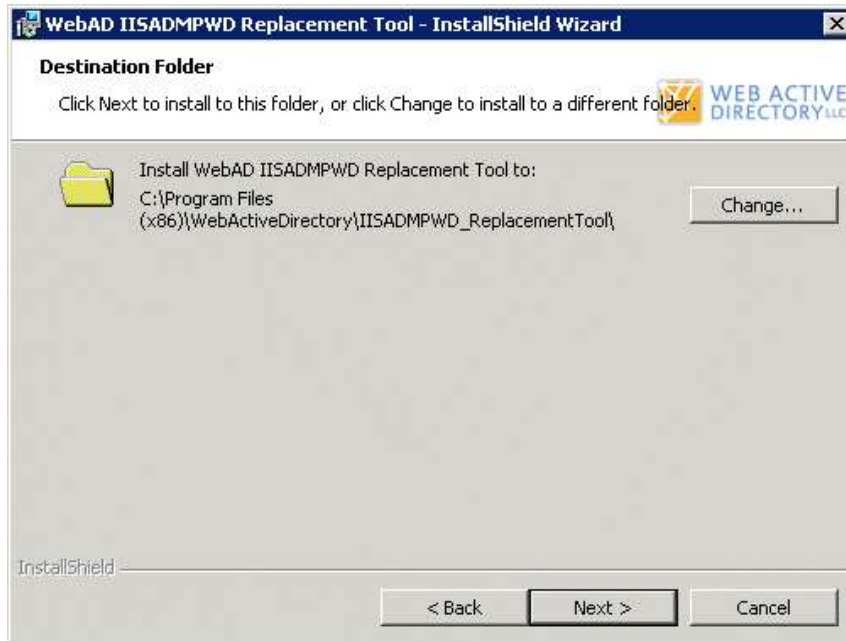
5. Review the license agreement and accept the terms after you review them.



Click Next to continue.

IISADMPWD Replacement Tool v1.4 Installation and Configuration Guide

6. Choose a directory where you want to install the solution.



Click Next to continue.

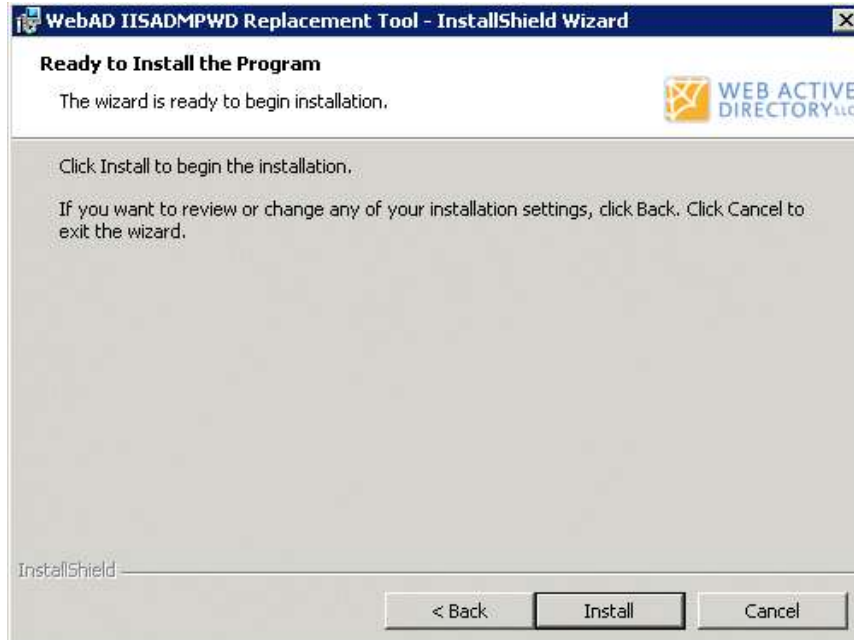
7. Choose the setup type. The Complete option installs both web applications and you can choose to install only one web application by choosing the Custom option.



Click Next to continue.

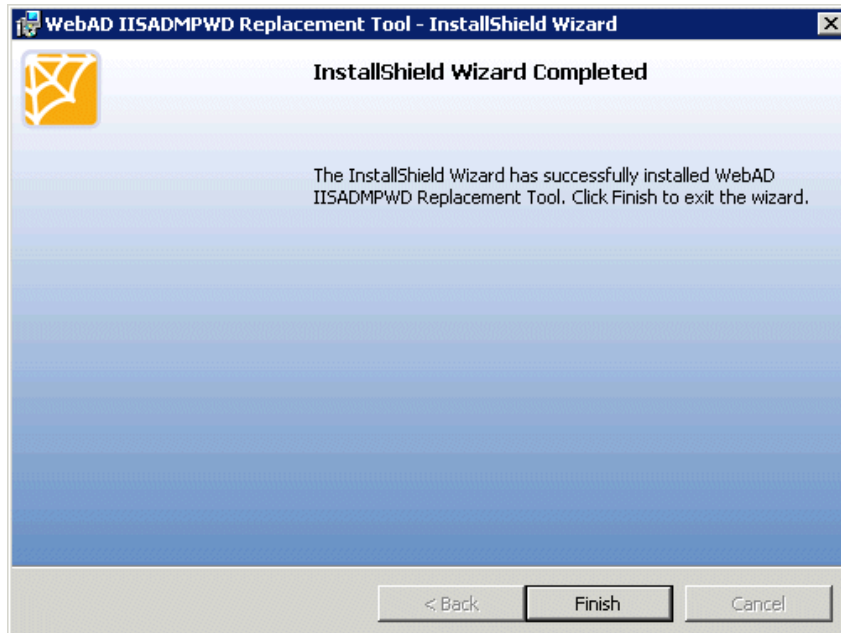
IISADMPWD Replacement Tool v1.4 Installation and Configuration Guide

8. You have entered all the information necessary to install IISADMPWD Replacement Tool on your system.



Click Next to install IISADMPWD Replacement Tool.

9. The installer installs the components you need to run IISADMPWD Replacement Tool. You will see the Completed Page once the installation completes.



Click Finish to close the installer.

IISADMPWD Replacement Tool v1.4

Installation and Configuration Guide

10. You are now ready to run IISADMPWD Replacement Tool. Check out the Quick Start Guide section to customize your configuration settings for your environment.

Quick Start Guide

Once you complete installation of IISADMPWD Replacement Tool, you can run it on the local server through the Program Files > Web Active Directory IISADMPWD Replacement Tool menu. You can also go directly to the web applications using your browser on ports 8501 and 8502.

Run the Check Password Status Web Application

Point a browser to <http://<YourServerName>:8501/> to run the Check Password Status application. You need to go to the /Admin page to configure application settings and the path to the Admin page looks like <http://<YourServerName>:8501/Admin>.

Once you verify that you can connect to the Check Password Status web application, go to the Configure the Check Password Status Application topic to set up the basic configuration values for the application.

Configure the Check Password Status Application

Once on the Check Password Status Admin page, you need to set a few configuration values so that you can properly run the Check Password Status web application. At a minimum, configure the following values to get started. Refer to the help text on the right side of the Admin page for help with other configuration values.

NOTE

You typically do not need to set the Service account name and Service account password values for the Check Password Status web application. Leave these values blank to begin and only set them if the application pool account (Network Service) cannot read the directory to determine a user's password status.

- **Change password app URL:** Set this value to the URL of the Change Password web application. This value tells the Check Password Status web application how to route a user who needs to change her password.
- **Application path:** Enter the URL to the back-end web application that you are protecting with the Check Password Status web application. This value tells the Check Password Status web application how to route a user whose password does not need to change.

Run the Change Password Web Application

Point a browser to <http://<YourServerName>:8502/> to run the Change Password application. You need to go to the /Admin page for the application to configure application settings and the path to the Admin page looks like <http://<YourServerName>:8502/Admin>.

IISADMPWD Replacement Tool v1.4

Installation and Configuration Guide

Once you verify that you can connect to the Change Password web application, go to the Configure the Change Password Application topic to set up the basic configuration values for the application.

Configure the Change Password Application

Once on the Change Password Admin page, you need to set the service account values so the Change Password web application can change passwords for users. Your users will be able to change their passwords once the service account credentials are set. Refer to the help text on the right side of the Admin page for help with other configuration values.

NOTE

The Change Password web application requires a service account that has permissions to change passwords in the directory. Refer to the Web Active Directory support website at support.webactivedirectory.com for more help with this and search for “change password permissions”. You can also review the article at https://getsatisfaction.com/web_active_directory/topics/what_permissions_does_a_service_account_need_to_reset_and_change_ad_passwords_and_to_unlock_ad_accounts for instructions.

- **Service account name:** The name of the service account with permissions to change passwords for your users.
- **Service account password:** The password for the service account.

IISADMPWD Replacement Tool Administration

The IISADMPWD Replacement Tool includes two web applications to allow you to replace the functionality in the original IISADMPWD tool from Microsoft. For each application, go to the Admin page available at <http://<YourServerName>:xxxx/Admin> to configure application settings. The Admin page explains the purpose of each configuration setting.

Helpful Videos

WebAD maintains a library of videos to help you configure and use IISADMPWD Replacement Tool. Access the videos at <http://webactivedirectory.com/products/iisadmpwd/videos> and find additional support at <http://support.webactivedirectory.com/>.

Best Practices for Implementation

Ideally, you will set up the IISADMPWD Replacement Tool Check Password Status application as the front end to the web application you are protecting. This application checks Active Directory to see if a user’s password needs to change. If the password needs changing, the user is redirected to the IISADMPWD Replacement Tool Change Password application. If no password change is required, the user will be passed through to the web application you are protecting and will be authenticated by that application.

IISADMPWD Replacement Tool v1.4

Installation and Configuration Guide

Securing the Admin Page

You can secure the Admin pages for both the IISADMPWD Replacement Tool web applications— Check Password Status and Change Password—using the Web.config file in each application's root directory.

1. Open Windows Explorer.
2. Go to the IISADMPWD Replacement Tool installation directory, typically <Program Files (x86)>\WebActiveDirectory\IISADMPWD_ReplacementTool.
3. Access the Login directory to modify Check Password Status application security and use the ChangePassword directory for Change Password application security.
4. Open the Web.config file for each directory in a text editor. You might need to run your text editor as an administrator to save the settings.
5. Find the <location /> element as specified below.

```
<location path="Admin">  
  <system.web>  
    <authorization>  
      <allow roles="Everyone" />  
      <deny users="*" />  
    </authorization>  
  </system.web>  
</location>
```

6. Modify the value of the roles attribute in the <allow /> element. Set this value to the DOMAIN\GroupName for the domain members you want to allow to access the Admin page. Separate multiple groups using a comma.
7. Save your changes.
8. Test the security to ensure that only authorized users can access the Admin page.