

---

# PeopleMinder v1.1 SR #1 Installation and Configuration Guide

---

Instructions to Install and  
Configure PeopleMinder  
v1.1 SR #1

---

Web Active Directory, LLC

---

# PeopleMinder v1.1 SR #1 Installation and Configuration Guide

---

## Contents

Overview .....	2
Installation Support.....	2
System Requirements .....	2
Upgrades from Previous Versions of PeopleMinder .....	2
Upgrade Procedure .....	3
Installation Instructions .....	3
Installation Procedure.....	3
Post-Installation Tasks .....	7
Import the Scheduled Task to Run PeopleMinder Each Day .....	7
Tweak Configuration Settings in the XML Configuration File .....	8
PeopleMinder Command Line Options.....	8
PeopleMinder Command Line Values.....	8
PeopleMinder Configuration File.....	9
PeopleMinder Configuration Values.....	9
Restricted Attribute Values.....	10
ConfigurationSet Element Attribute Values (<ConfigurationSet />) .....	10
Configuration Element Attribute Values (<Configuration />).....	10
Configuration Element Child Elements .....	11
DaysBeforeExpirationToSend Element (<DaysBeforeExpirationToSend />) .....	12
Message Element (<Message />).....	12
Message Element Child Elements .....	12

# PeopleMinder v1.1 SR #1 Installation and Configuration Guide

---

## Overview

These configuration notes provide direction on configuring PeopleMinder for your environment. At a minimum, you must ensure to create the scheduled task and set up the email options before running PeopleMinder. Refer to the Import the Scheduled Task to Run PeopleMinder Each Day and Tweak Configuration Settings sections for more information.

## Installation Support

Call Web Active Directory Technical Support at +1 800.747.3565 extension 200 or send an email to [support@webactivedirectory.com](mailto:support@webactivedirectory.com) if you need assistance with issues that arise while installing or configuring PeopleMinder.

## System Requirements

Please note the important system requirements detailed below before installing PeopleMinder.

- Windows Server 2003 or later (including Windows Server 2008 and 2008 R2): Web, Standard, Enterprise or Datacenter Edition: Hosts PeopleMinder application. Please ensure the server is not a domain controller and is a member server in a domain.
- .NET Framework version 2.0 SP1 or SP2: Runs Microsoft .NET applications. You must install at least Service Pack 1 of the .NET Framework and Web Active Directory recommends that you install Service Pack 2. You can download SP2 from Microsoft's download site at <http://www.microsoft.com/downloads/details.aspx?familyid=5B2C0358-915B-4EB5-9B1D-10E506DA9D0F&displaylang=en>.
- Windows service account with permissions to run PeopleMinder and connect to Active Directory: Used by PeopleMinder to run the utility and connect to Active Directory to search for users with expiring passwords.

### IMPORTANT NOTE

---

Your service account must have privileges to run a Windows scheduled task as well.

---

- 3 MB disk space: Stores physical files used to run PeopleMinder

## Upgrades from Previous Versions of PeopleMinder

PeopleMinder will smoothly upgrade from v1.0 and v1.1 to v1.1 SR #1. Follow the guidelines below to properly upgrade to the new version.

# PeopleMinder v1.1 SR #1 Installation and Configuration Guide

---

## Upgrade Procedure

The PeopleMinder upgrade procedure is very short and easy. You merely need to run the PeopleMinder installer package to upgrade your current installation. The upgrade process preserves all your current PeopleMinder customizations. Use the Installation Procedure section on page 3 to install the latest release from scratch.

## Installation Instructions

This section includes installation instructions for new installations of PeopleMinder.

### Installation Procedure

The PeopleMinder installer includes an executable component and several resource files. The default installation directory is %Program Files%\WebActiveDirectory\ PeopleMinder.

The PeopleMinder installer contains everything you need to run PeopleMinder. Refer to the System Requirements section on page 2 for more information about prerequisites. The installation takes less than two minutes and leaves you with a clean PeopleMinder installation that is ready for you to use in your environment after a little configuration.

### NOTE

---

If you are installing PeopleMinder on Windows Server 2008, ***you must run the installer as an administrator*** or the installation will not complete all the setup tasks. Even if you are logged in to the installation server as an administrator, the operating system will not run the installation under the administrator account's privileged security context unless you explicitly run it this way. Ensure you right-click the WebAD\_PeopleMinderSetup.exe file and choose ***Run as administrator*** to install PeopleMinder under an administrative security context.

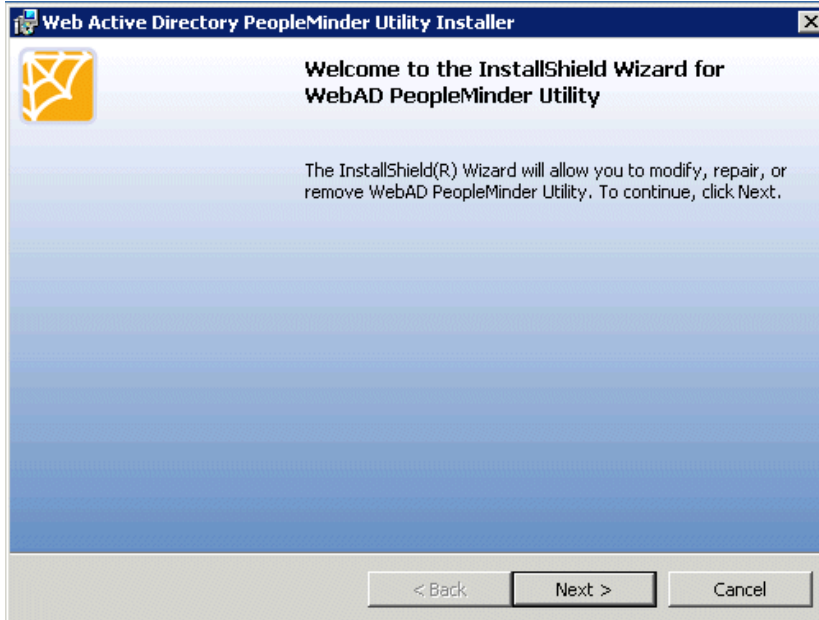
---

1. Unzip the contents of the zip file you downloaded from the Web Active Directory download site to a location on your local installation system.
2. Read the important installation notes contained in the installation guide included with the download package.
3. To begin the installation, run the WebAD\_ PeopleMinderSetup.exe file that you extracted from the zip file.

# PeopleMinder v1.1 SR #1 Installation and Configuration Guide

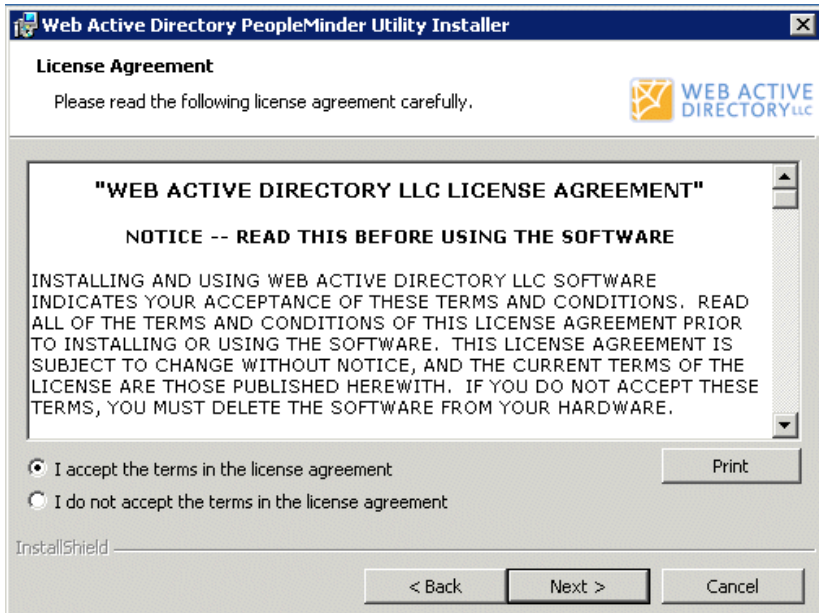
---

4. The installer begins and displays the PeopleMinder Installer Welcome Page.



Click Next to continue.

5. Review the license agreement and accept the terms after you review them.

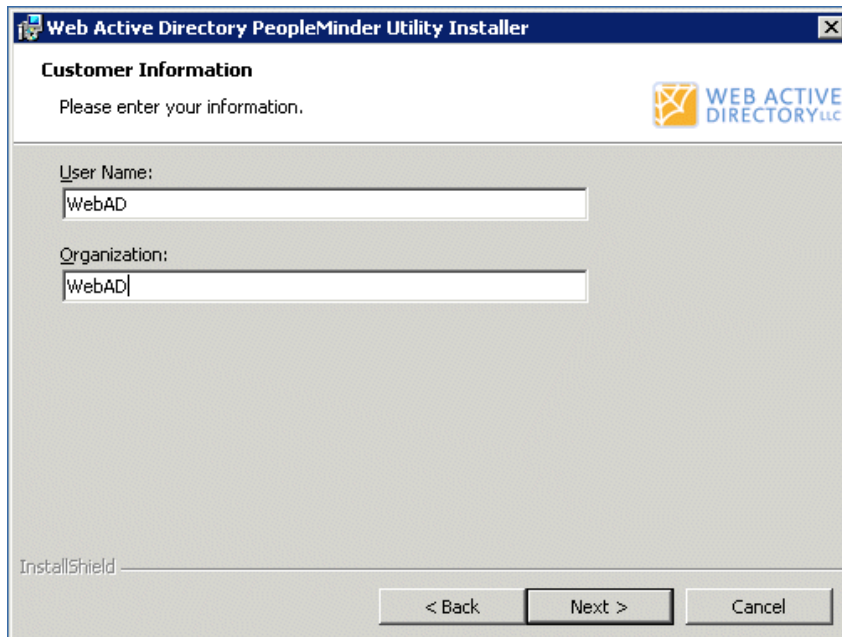


Click Next to continue.

# PeopleMinder v1.1 SR #1 Installation and Configuration Guide

---

6. Enter the requested customer information.



The image shows a Windows-style installer window titled "Web Active Directory PeopleMinder Utility Installer". The window has a blue header bar with the title and a close button. Below the header, the text "Customer Information" is displayed, followed by "Please enter your information." and the Web Active Directory LLC logo. There are two text input fields: "User Name:" with the text "WebAD" and "Organization:" with the text "WebAD". At the bottom left, it says "InstallShield". At the bottom right, there are three buttons: "< Back", "Next >", and "Cancel".

Click Next to continue.

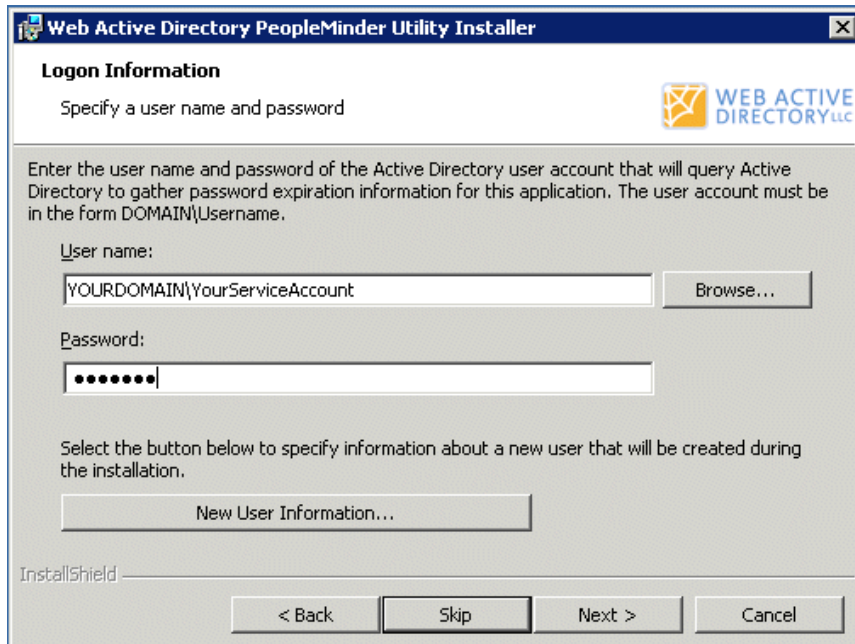
7. Enter the service account credentials for the service account that will query Active Directory for Windows users who have passwords expiring soon. You can skip this step if you want PeopleMinder to run under the security context of the account running PeopleMinder.

## IMPORTANT NOTE

The account you enter must have privileges to query the password expiration date attribute in AD or PeopleMinder will not work properly. You can grant this permission using the Delegation of Control wizard in Active Directory Users & Computers.

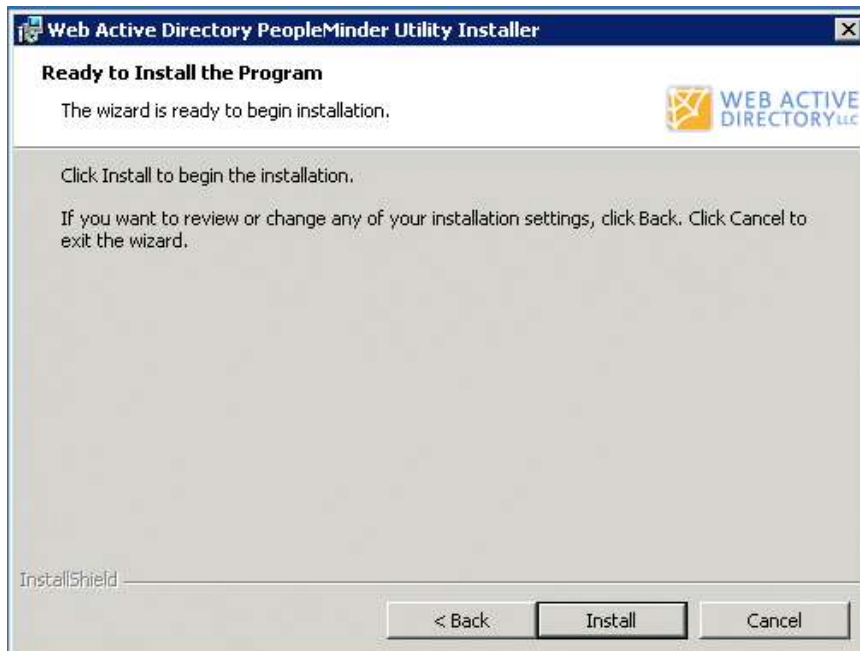
# PeopleMinder v1.1 SR #1 Installation and Configuration Guide

---



Click Next to continue or click Skip to use credentials from the application security context.

8. You have entered all the information necessary to install PeopleMinder on your system.

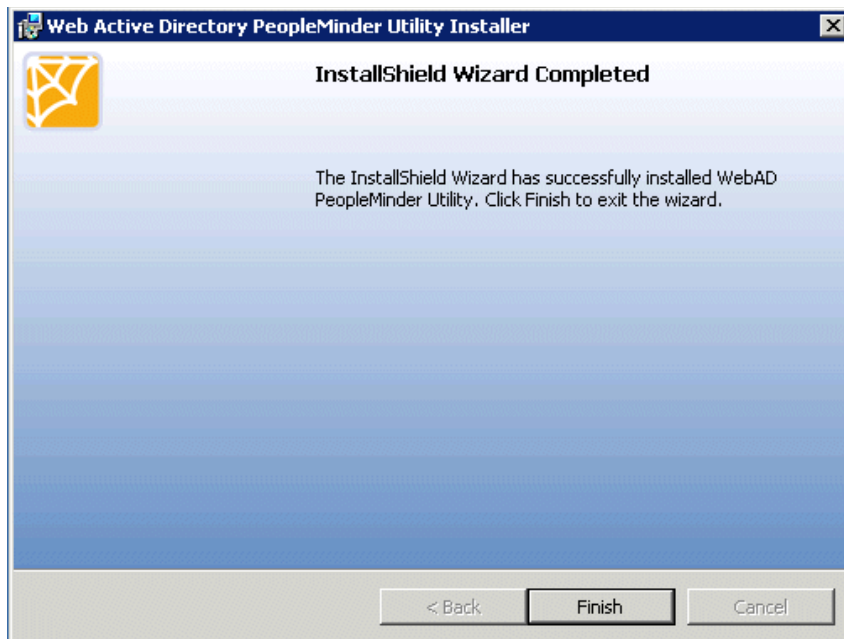


Click Next to install PeopleMinder.

9. The installer installs the components you need to run PeopleMinder. You will see the Completed Page once the installation completes.

# PeopleMinder v1.1 SR #1 Installation and Configuration Guide

---



Click Finish to close the installer.

10. You are now ready to run PeopleMinder.

## Post-Installation Tasks

Once you complete installation of PeopleMinder, perform the following tasks and you will be ready to run PeopleMinder on a scheduled basis to send email reminders to Windows users in your environment whose passwords are expiring.

### Import the Scheduled Task to Run PeopleMinder Each Day

You need to import the appropriate scheduled task from the ScheduledTasks subdirectory of the PeopleMinder installation directory into your Task Scheduler and set the service account and schedule for running the task. This allows the scheduled task to run PeopleMinder on a daily basis to send out email reminders to users in your environment with expiring Windows passwords. You can also tweak other scheduled task settings if you need.

- Use the *Web Active Directory PeopleMinder - Daily Run - Win 2003.job* task for Windows Server 2003. You can drag and drop the .job file into the Scheduled Tasks directory on the server running PeopleMinder.
- Use the *Web Active Directory PeopleMinder - Daily Run - Win 2008.xml* task for Windows Server 2008. You can use the Import Task option in the Task Scheduler to import the task. Please create a WebActiveDirectory folder in your Task Scheduler Library to separate PeopleMinder tasks from other tasks.



# PeopleMinder v1.1 SR #1 Installation and Configuration Guide

---

## Tweak Configuration Settings in the XML Configuration File

Set the common configuration values for the options you want to customize before you begin using PeopleMinder. Refer to the PeopleMinder Configuration Values section for more information about setting these values. You can find the configuration file in the PeopleMinder installation directory and it is called PeopleMinder.config.

Focus on setting the following values first to configure PeopleMinder for sending emails in your environment.

- **SMTP Server:** Set the SMTP server you want to use to relay email messages from PeopleMinder to users with Windows account passwords that will expire soon. Use the SmtptServer and SmtptPort attributes of the <Configuration /> element to set these values.
- **From Address:** Set the <FromAddress /> element in the message to an appropriate email address in your environment.

## PeopleMinder Command Line Options

The main PeopleMinder executable, PeopleMinder.exe, resides in the PeopleMinder installation root directory typically at %Program Files%\WebActiveDirectory\PeopleMinder. You can pass a number of command line options to the PeopleMinder executable at runtime to customize the application behavior.

### PeopleMinder Command Line Values

The following command line parameters allow you to customize the runtime behavior of PeopleMinder. You can also get helpful information about the parameters by just typing *PeopleMinder.exe* with no arguments from the command line. This will not run PeopleMinder and instead will only show you the parameters you can set. Ensure you preface each parameter using a slash (/) character.

### Command Line Example

The following example sends a test email to [TestAddress@YourDomain.com](mailto:TestAddress@YourDomain.com) using the configuration values in the PeopleMinder.config file found in the PeopleMinder directory.

```
C:\Program Files\WebActiveDirectory\PeopleMinder> PeopleMinder.exe  
/configfile PeopleMinder.config /testemail TestAddress@YourDomain.com
```

The following example shows the license registration page for PeopleMinder.

```
C:\Program Files\WebActiveDirectory\PeopleMinder> PeopleMinder.exe /register
```

PARAMETER	VALUES EXPLANATION
?, h, or help	Shows help information for using command line parameters with PeopleMinder.

# PeopleMinder v1.1 SR #1 Installation and Configuration Guide

---

register	Shows the license registration screen to allow you to register PeopleMinder. Using this parameter causes PeopleMinder to ignore all other parameters.
writeblankconfig	Writes a default configuration file with no values set. This allows you to begin with a new configuration file and then set values.
configfile	Indicates the path to the configuration file to use to run PeopleMinder.
testemail	Sends a test email message to the address that follows the parameter.

## PeopleMinder Configuration File

The PeopleMinder configuration file—called `PeopleMinder.config`—contains all the configuration settings that PeopleMinder needs to run. You can make changes to the configuration file to customize PeopleMinder for your environment. This XML file contains configuration settings that customize settings such as which Active Directory containers are searched, how often messages are sent and the content of sent messages.

The configuration file contains a root node called `<ConfigurationSet />` and this node can contain multiple `<Configuration />` elements. You can have as many `<Configuration />` elements as you need in the same configuration file. This allows you to highly customize PeopleMinder by specifying different messages for different OUs, customizing messages for the same sets of users depending on the number of days before their passwords expire, setting different reminder intervals, searching different bind paths, etc.

To create a new configuration, merely copy an existing `<Configuration />` element—including the opening and closing `<Configuration>` and `</Configuration>` tags—and paste the element below existing `<Configuration />` elements. PeopleMinder processes every `<Configuration />` element in the configuration file in order from top to bottom and this allows you to highly customize the configuration sets to send out messages.

## PeopleMinder Configuration Values

Use the configuration values in the PeopleMinder configuration file to customize how PeopleMinder works in your environment. Some values allow you to put in any text while other values require you to choose from a pre-determined set of options. You can even use full HTML markup in your message body!

# PeopleMinder v1.1 SR #1 Installation and Configuration Guide

---

## Restricted Attribute Values

The following attributes only allow you to enter values from a finite set of options. Please ensure you enter the values *exactly* as specified in the list below or the configuration setting will be ignored or an application error will occur.

ATTRIBUTE	PERMISSIBLE VALUES
MessageMode	Send, Test
LoggingLevel	Info, Verbose
LoggingMode	Overwrite, Append
PasswordAgeUnit	Days, Minutes

## ConfigurationSet Element Attribute Values (<ConfigurationSet />)

The <ConfigurationSet /> element contains several attributes that you can modify to change PeopleMinder's behavior. Note that these attributes apply to all <Configuration /> elements and you cannot change these values from one <Configuration /> element to another.

ATTRIBUTE	DESCRIPTION
LogFileName	Sets the file name for the log file that contains logging information when PeopleMinder runs. You can set this path as a relative path by only entering a file name and this will put the file into the same directory as PeopleMinder. You can also specify an absolute path with a full path name if you desire.
LoggingLevel	Sets the logging level threshold for logging errors during a run. You can set this value to Info or Verbose. The Info level logs less information than Verbose level. Info is the default value.
LoggingMode	Sets the logging mode for writing to the log file. You can set this value to Overwrite or Append. Overwrite clears all existing log file content and Append keeps existing log file content and adds new content during a run to the end of the file. Append is the default value.

## Configuration Element Attribute Values (<Configuration />)

The <Configuration /> element contains attributes and elements that you can modify to change PeopleMinder's behavior. Note that the settings in a <Configuration /> element apply to only this configuration and do not affect other <Configuration /> elements.

ATTRIBUTE	DESCRIPTION
MaximumPasswordAge	Sets the number of time units (typically days and determined by the PasswordAgeUnit configuration value) before a password expires in your domain. This value should mirror the maximum password age value in your Active Directory domain's password policy but you

# PeopleMinder v1.1 SR #1 Installation and Configuration Guide

---

PasswordAgeUnit	can set it to a different value if you desire. Sets the unit of time for measuring password age. Valid values include Days and Minutes.
ActiveDirectoryBindPath	Sets the bind path to use when searching Active Directory for expiring accounts. If this value is not set, PeopleMinder searches all user accounts from the root of the domain in which the PeopleMinder server resides.
ActiveDirectoryUserName	Sets the name of the service account to use to bind to Active Directory and perform queries to retrieve users with expiring passwords. PeopleMinder binds to Active Directory under the service account running the scheduled task if you do not set this value.
ActiveDirectoryPassword	Password for the service account set in the ActiveDirectoryUserName value. You can leave this value blank if you do not set a ActiveDirectoryUserName value.
ActiveDirectorySearchString	An LDAP search filter to use to restrict objects searched in the directory. For example, the "(&(objectcategory=person)(objectclass=user))" filter only searches user accounts and excludes contact objects. You can leave this value blank if you desire.
ActiveDirectoryUserEmailAttribute	The Active Directory email attribute to use to look up a user's email address, typically the "mail" attribute.
SmtpServer	The IP address or DNS name of the SMTP server off which to relay outbound email messages to users when passwords expire.
SmtpPort	The SMTP port on the SMTP server. This is typically port 25.
SmtpUseSsl	Indicates whether to connect to the SMTP server using SSL. Defaults to false.
SmtpUseDefaultCredentials	Indicates whether to use the credentials of the account running PeopleMinder when connecting to the SMTP server. Defaults to false.
SmtpUserDomain	The domain to use to authenticate to the SMTP server. This value is optional.
SmtpUserName	The Active Directory account username to use to authenticate to the SMTP server.
SmtpUserPassword	The password of the account to use to authenticate to the SMTP server.

## Configuration Element Child Elements

The <Configuration /> element also contains child elements that you can modify.

CHILD ELEMENT	DESCRIPTION
---------------	-------------

# PeopleMinder v1.1 SR #1 Installation and Configuration Guide

---

DaysBeforeExpirationToSend	Sets the number of days to send a message before a user's Windows account password expires. You can have as many <DaysBeforeExpirationToSend /> as you like and each element can only contain one numeric value. By adding multiple <DaysBeforeExpirationToSend /> elements, you can highly customize the schedule of when you want users to receive expiration messages.
Message	Sets properties for the email message sent to users whose Windows account password is expiring.

---

## DaysBeforeExpirationToSend Element (<DaysBeforeExpirationToSend />)

Use one or more <DaysBeforeExpirationToSend /> elements to customize the email reminder schedule for a configuration. You may add as many of these elements as you desire and each element should have a different value for the number of days before the password expires.

### Example

The following configuration sends five reminder emails before a password expires, including sending emails 14, seven, three, two, one and zero days before the password expires.

```
<DaysBeforeExpirationToSend>14</DaysBeforeExpirationToSend>
<DaysBeforeExpirationToSend>7</DaysBeforeExpirationToSend>
<DaysBeforeExpirationToSend>3</DaysBeforeExpirationToSend>
<DaysBeforeExpirationToSend>2</DaysBeforeExpirationToSend>
<DaysBeforeExpirationToSend>1</DaysBeforeExpirationToSend>
<DaysBeforeExpirationToSend>0</DaysBeforeExpirationToSend>
```

## Message Element (<Message />)

The <Message /> element contains the configuration settings for the email message you want to send to users in this <Configuration /> element. It contains an attribute and several child elements.

ATTRIBUTE	DESCRIPTION
MessageMode	Sets the mode for sending messages. You can set this value to Send or Test. The Send mode actually sends an email message and the Test mode writes information about emails that it would send to the PeopleMinder log file. Test is the default value.

---

## Message Element Child Elements

You can use the %NumberOfDays% variable to display information in the email message about the number of days remaining before a user's password expires. Ensure that you surround the variable name, NumberOfDays, with the % (percent) characters or the value will not be substituted in the message. You can use this variable in the subject or message body.

# PeopleMinder v1.1 SR #1 Installation and Configuration Guide

---

CHILD ELEMENT	DESCRIPTION
Subject	The text of the subject line.
FromAddress	The source address that originates the message. This value shows up in the user's email Inbox as the sender of the message.
MessageBody	The message body for the email. You can use full HTML markup here as long as the markup is within a <![CDATA[...]] section. You may also use the %NumberOfDays% variable in the message body, which is the actual number of days before a user's Windows password is set to expire.